

Overview of the European Woodworking Industry: employment, challenges and opportunities



Final Conference

16.09.2021 - Riga, Latvia

About CEI-Bois

The European Confederation of the Woodworking Industries is based in Brussels and represents **22 European and National organisations from 16 countries** and is the body backing the interests of the whole industrial European wood sector: more than **180.000 companies** generating an **annual turnover of 152 billion euros** and **employing 1 million workers** in the EU.

CEI-Bois mission is to:

- **promote** the Sector and the use of wood in its numerous forms and applications
- **represent** and safeguard the European Woodworking Industries interests
- **highlight** the natural sustainability of wood and wood-based products
- CEI-Bois is a recognised European **Social Partner**



Blue – Direct representation through CEI-Bois National Federation Members
 Green – Indirect representation through CEI-Bois' European Sector Organisation Members

The Importance of the Woodworking Industry

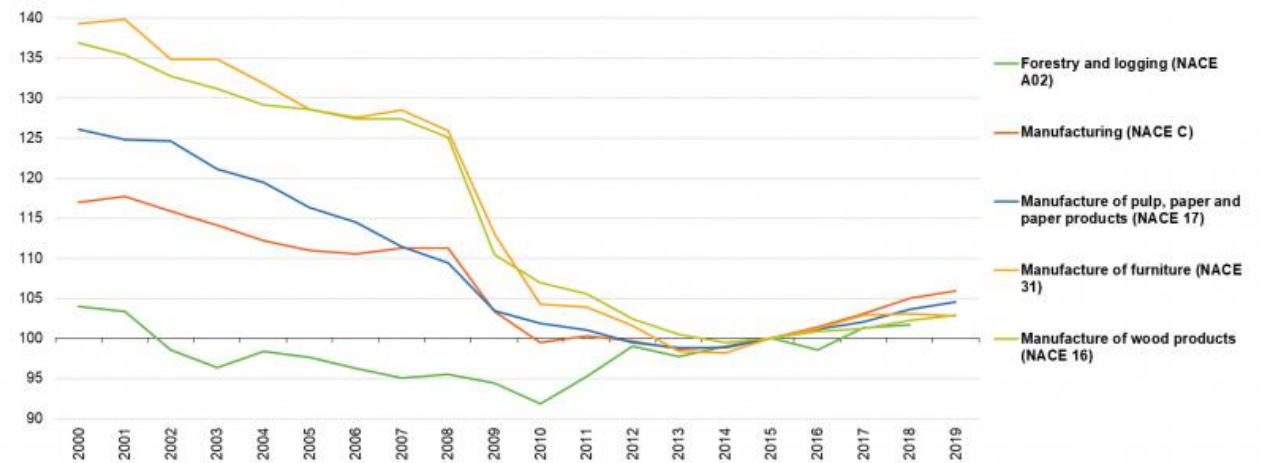
- In 2018, about 397 000 enterprises were active in wood-based industries across the EU, representing 20% of EU manufacturing enterprises.
- The production of roundwood in the EU-27 continues to increase; in 2019 it was 24% higher than in 2000
- In 2018, the Gross Value Added (GVA) of wood-based industries in the EU-27 was EUR 139 billion or 7.1 % of the total manufacturing industry
- Most wood-based industries had a relatively high number of small or medium-sized enterprises *(except for pulp & paper manufacturing characterized by economies of scale)*



The Importance of the Woodworking Industry

The wood-based industries (including paper, furniture, printing ...) employed 3.1 million persons across the EU-27 in 2018 or 10.3 % of the manufacturing total.

Employment in wood-based industries compared with total manufacturing, EU-27, 2000–2019
(2015 = 100)



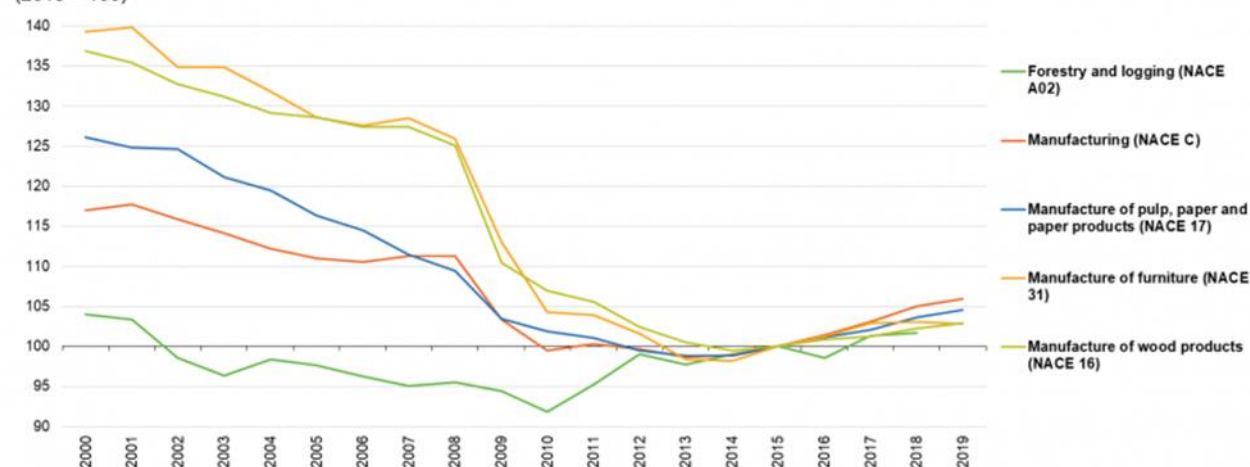
Source: Eurostat (online data codes: sts_inlb_a and nama_10_a64_e)

The Importance of the Woodworking Industry

Across the EU-27, manufacturing employment fell by 9 % between 2000 and 2019, while the largest losses among the three wood-based industries were recorded

- for furniture manufacturing (26 % fewer persons employed).
- Pulp, paper and paper products was less affected (17 % reduction in employment during the 2000–2019 period)
- while employment in manufacturing of wood products dropped by 25 % between 2000 and 2019.

Employment in wood-based industries compared with total manufacturing, EU-27, 2000–2019
(2015 = 100)



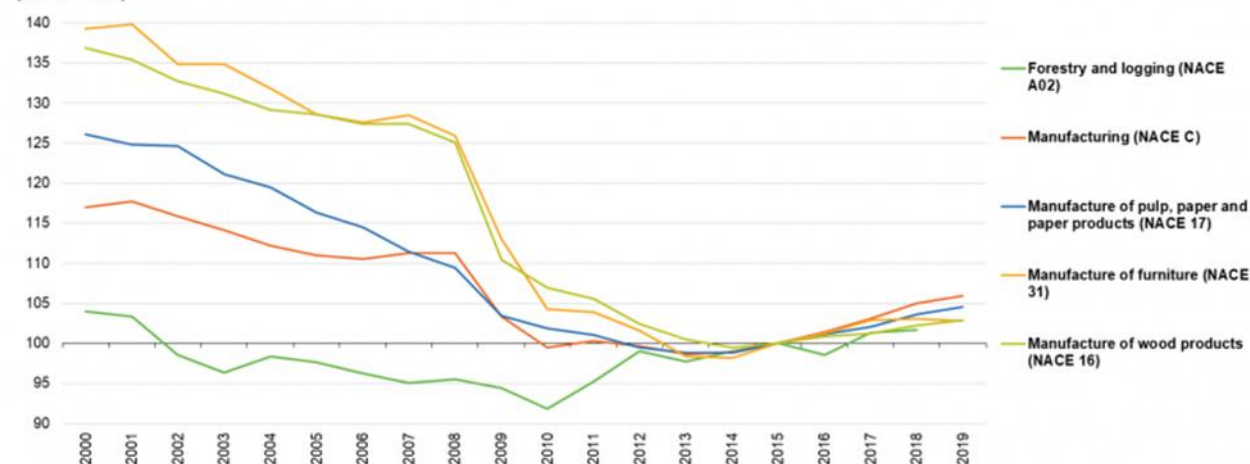
Source: Eurostat (online data codes: sts_inib_a and nama_10_a64_e)

The Importance of the Woodworking Industry

In comparison, the forestry and logging industry had a decrease in employment of about 2 % from 2000 to 2018.

To note: the figures on employment in the woodworking sector provide an indication of the overall employment, although one should keep in mind that some countries do not consider firms with less than 20 employees. Thus, the global figures tend to substantially underestimate the employment in small and medium-sized industrial sectors

Employment in wood-based industries compared with total manufacturing, EU-27, 2000–2019
(2015 = 100)



Source: Eurostat (online data codes: sts_inlb_a and nama_10_a64_e)

The EU Green Deal & Renovation Wave

- Rising global awareness of climate change
- 20 % of the CO₂ Emissions from the building sector
- Increased use of Wood is the solution to many of the problems
- Important sector for today and tomorrow
- Many opportunities
- A prosperous future ahead but;

Challenges

- An ageing workforce
- Skills
- Difficulties with recruitment- young people reluctant to enter this sector
- Productivity
- To few school – producing to few students – easy to close down – hard to start up
- Companies looking elsewhere for recruitment
- Important roles for up- and reskilling
- VET is providing help for some; but
- European system
- National systems
- Mutual recognition of competence

European Sector Social Dialogue

- At European level, the Social Dialogue represents the way to improve the European governance through the involvement of the social partners in decision-making and in the implementation process.
- The EU Wood Sector Social Dialogue brings together the Wood Industry workers and employers from the EU member States
- A unique platform



Social Partner Actions

- CEI-Bois has been actively involved in projects promoting the attractiveness of the sector
- *“Perspectives and Challenges of the Woodworking Industries” (2017-2019)*
 - A joint project which provided a good insight on the strengths and challenges the sector’s image is facing.
 - It presented concrete examples of the best practices and solutions that have been tested and/or implemented in Croatia, Portugal, Sweden, United Kingdom and Belgium.
 - The Woodworking Industry needs to make efforts to appeal to the next generations by using the appropriate tools.
 - Within this context, social media play a crucial role in promoting the sector’s strengths and attractiveness.

Conclusions

- Similar problems throughout the sector and European Industry
- Alternative ways are needed
- Work with Attractiveness
- Companies
- Moore schools
- VET where possible
- Re-skilling and upskilling
- Social Partners can promote and improve the woodworking sector at a European Level and facilitate exchange between employers, workers, and VET providers

Thank you !